



# O<sub>2</sub>REMOTE

# USER MANUAL

1. Disconnect oxygen tube and place container in front of concentrator.

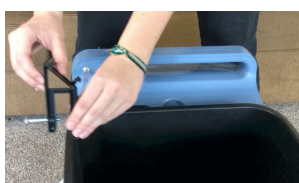


*DO NOT COVER AIR INTAKE VENTS!*

2. Wrap supplied bungee cord around container and concentrator and pull snug with string stop



3. Attach swivel clip



Make sure clip is off-center

4. Make sure the cord is above the bolt!

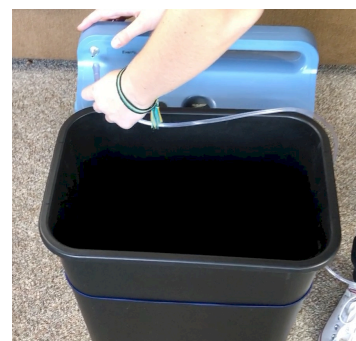
*This prevents the cord from slipping down while using*



5. Attach swivel coupler to 7ft clear tube



6. Attach the free end of clear tube back to concentrator



7. Attach main oxygen tube to swivel coupler and clear tube



8. Place swivel coupler in swivel clip





# O<sub>2</sub>REMOTE

# USER MANUAL

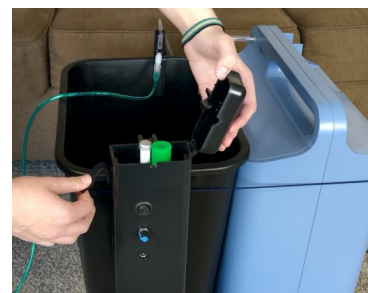
9.

Make sure it looks exactly like this



10.

Hang the O2Remote on container and open lid



11.

Separate wheels and place tube between them and close the lid



12.

Attach flap to top of lid



13.

Final set-up should look very close to this



14.

Rotate speed dial clockwise to increase speed



**OPERATING YOUR O<sub>2</sub>REMOTE:** push the power switch to turn on power. Push either “IN” or “OUT” on the remote to operate. Turn speed dial to adjust speed.

**CHARGING THE O<sub>2</sub>REMOTE:** Connect charger to front of machine. It is perfectly safe to leave the charger connected while using.

**ALWAYS BE AWARE OF THE POSSIBILITY YOUR TUBING MAY STILL KINK. VISUALLY INSPECT YOUR TUBING IN THE CONTAINER REGULARLY AND ESPECIALLY AT NIGHT BEFORE GOING TO BED TO ENSURE YOUR TUBING IS NOT KINKED OR PINCHED.**



# O<sub>2</sub>REMOTE

# USER MANUAL

## INCLUDED ITEMS WITH O2REMOTE



## TIPS AND TRICKS

### **TUBING MANAGEMENT:**

- On initial set-up and when using new tubing, load the device as directed and then retract and release the entire length of tubing 5 or 6 times. This will cause the tubing to relax and straighten. During this time, expect the tubing to twist and kink until it relaxes by going through the rollers several times.
- If the tubing becomes stuck while dispensing, push the “IN” button for a second to back the tubing up. Then push the “OUT” button.
- Throughout the day as you use your device, make sure to **intentionally dispense the ENTIRE length of tubing at least 2 or 3 times a day** – this will keep your tubing free of twists.

### **Containers:**

- use 13 gallon kitchen type containers, or 10 gallon office trash cans. You can go to **uline.com** and search for “10 gallon office trash can” or **walmart.com** and search for “13 gallon swing lid trash can”. Containers that are close to 20 inches tall work best.

### **BATTERIES:**

- eventually, you will need to change the battery in your remote control with two (2) CR2016 type ‘coin cell’ batteries